

Fernbrook
HOMES

ZANCOR
HOMES

© 2021 Fernbrook Homes. © 2021 Zancor Homes.



Fernbrook
HOMES

ZANCOR
HOMES



ELEVATION C 1,656 SQ. FT.



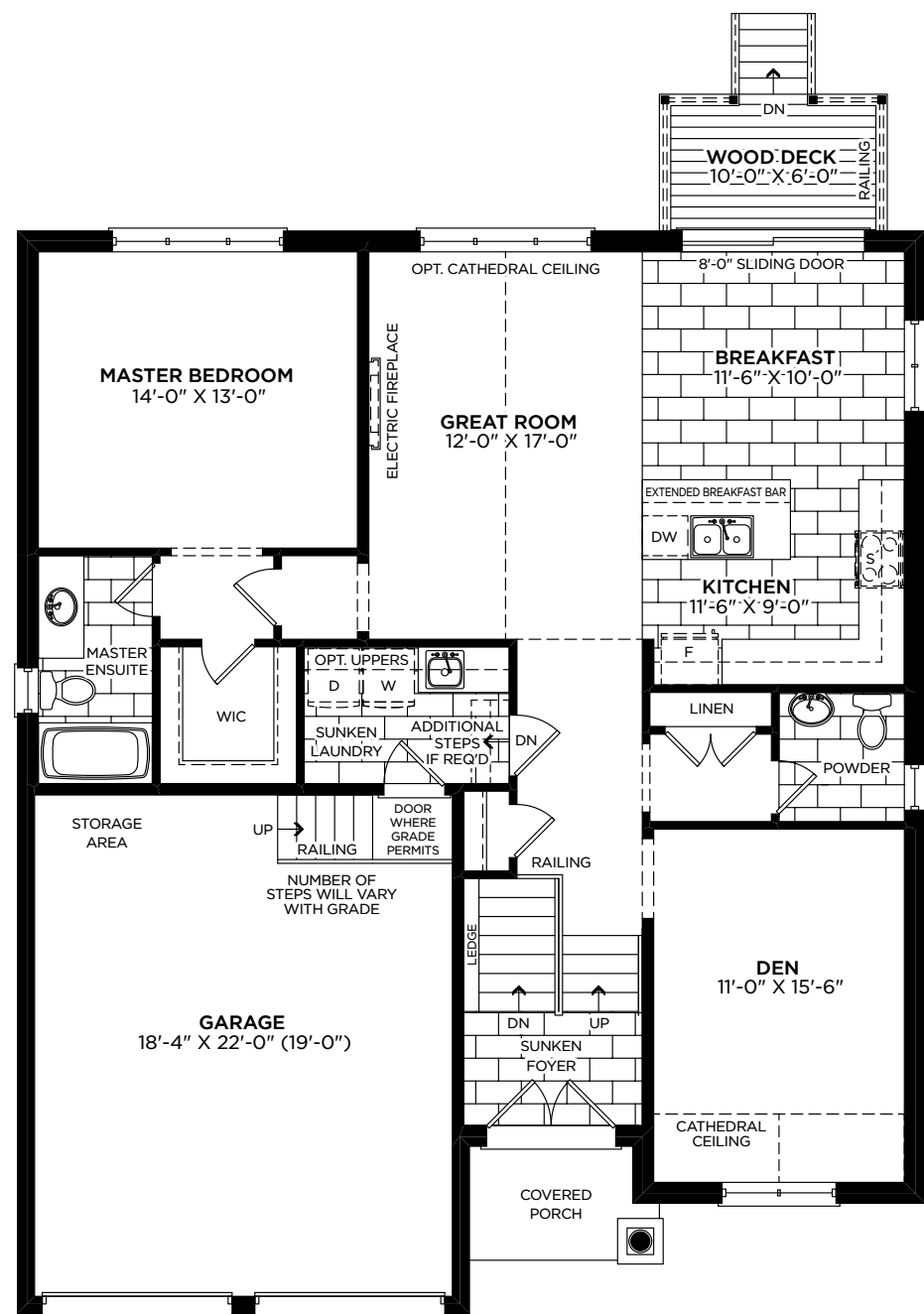
ELEVATION A 1,652 SQ. FT.



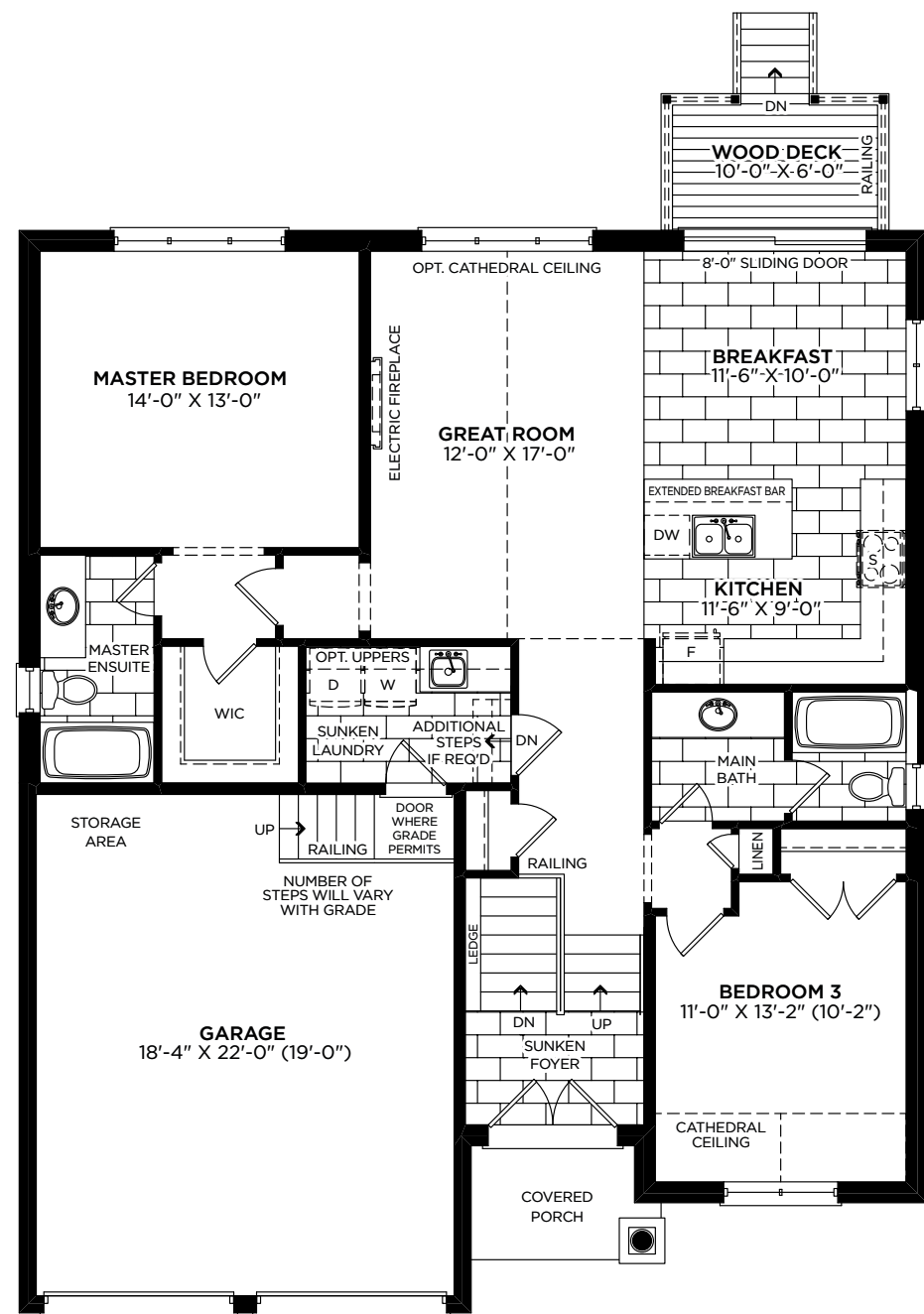
ELEVATION B 1,652 SQ. FT.

DORRAN

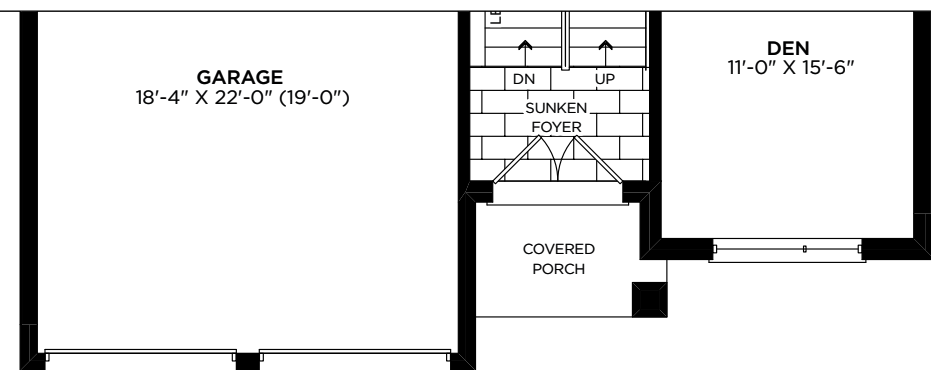
50



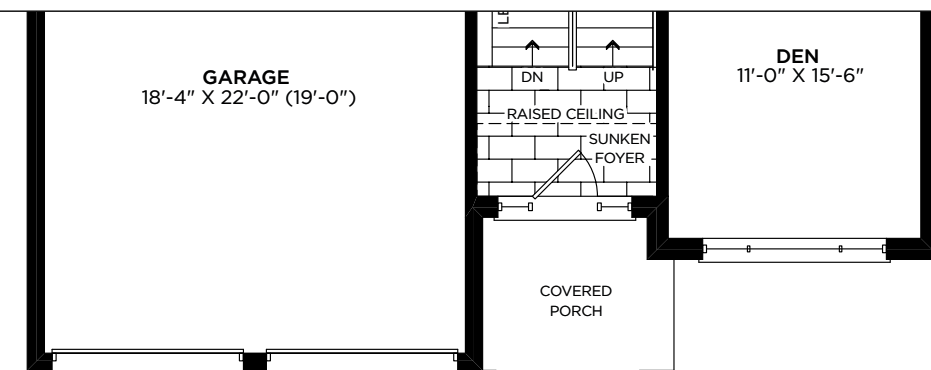
MAIN FLOOR ELEVATION A



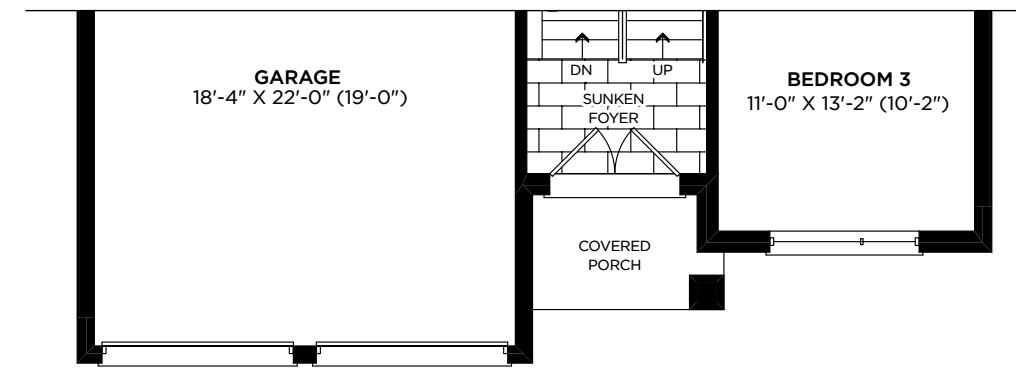
ALTERNATE MAIN FLOOR ELEVATION A



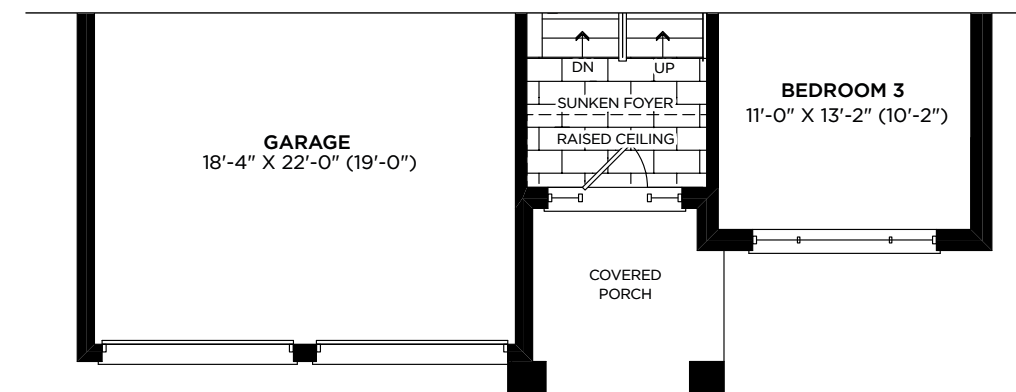
MAIN FLOOR ELEVATION B



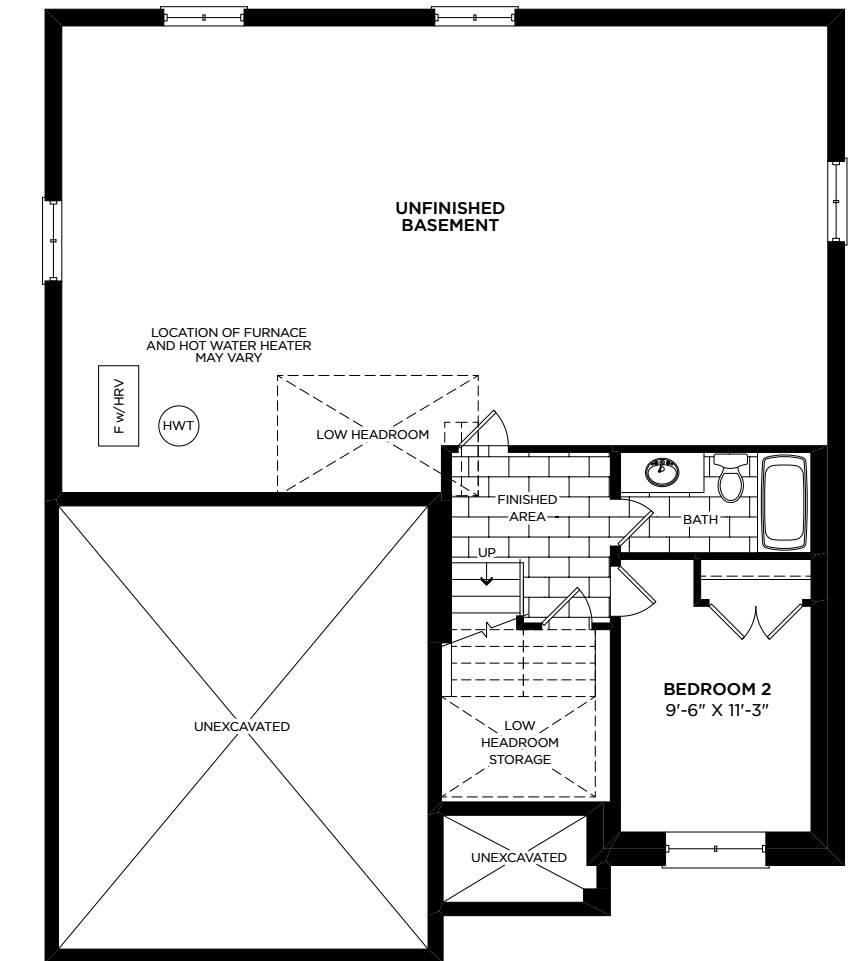
MAIN FLOOR ELEVATION C



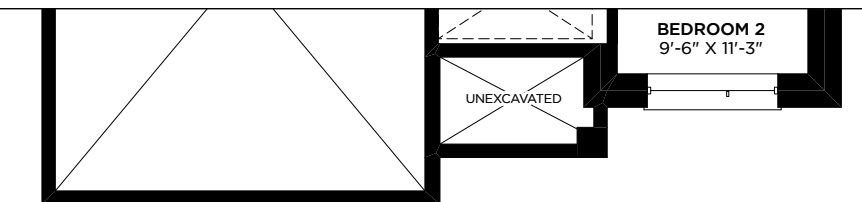
ALTERNATE MAIN FLOOR ELEVATION B



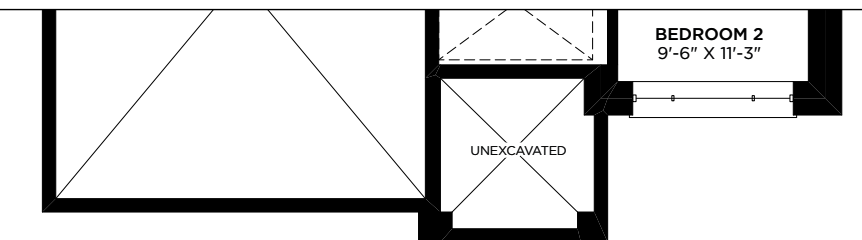
ALTERNATE MAIN FLOOR ELEVATION C



BASEMENT ELEVATION A



BASEMENT ELEVATION B



BASEMENT ELEVATION C



DORAN

ELEVATION A 1,652 SQ. FT. \ ELEVATION B 1,652 SQ. FT. \ ELEVATION C 1,656 SQ. FT.
INCLUDES 314 SQ. FT. FINISHED BASEMENT.

All illustrations are artist's concept. Specifications and conditions are subject to change without notice. Actual usable floor space may vary from the stated floor area. Tile patterns may vary. Window size and location may vary. Location of furnace, hot water tank and support posts and beams are determined by the HVAC designer and architect respectively. Number of exterior steps may vary depending on the lot and the grading of individual home sites. Please see Sales for details. Materials, suppliers and upgrades may vary by builder. E.&O.E. 50-1





ELEVATION C 1,778 SQ. FT.



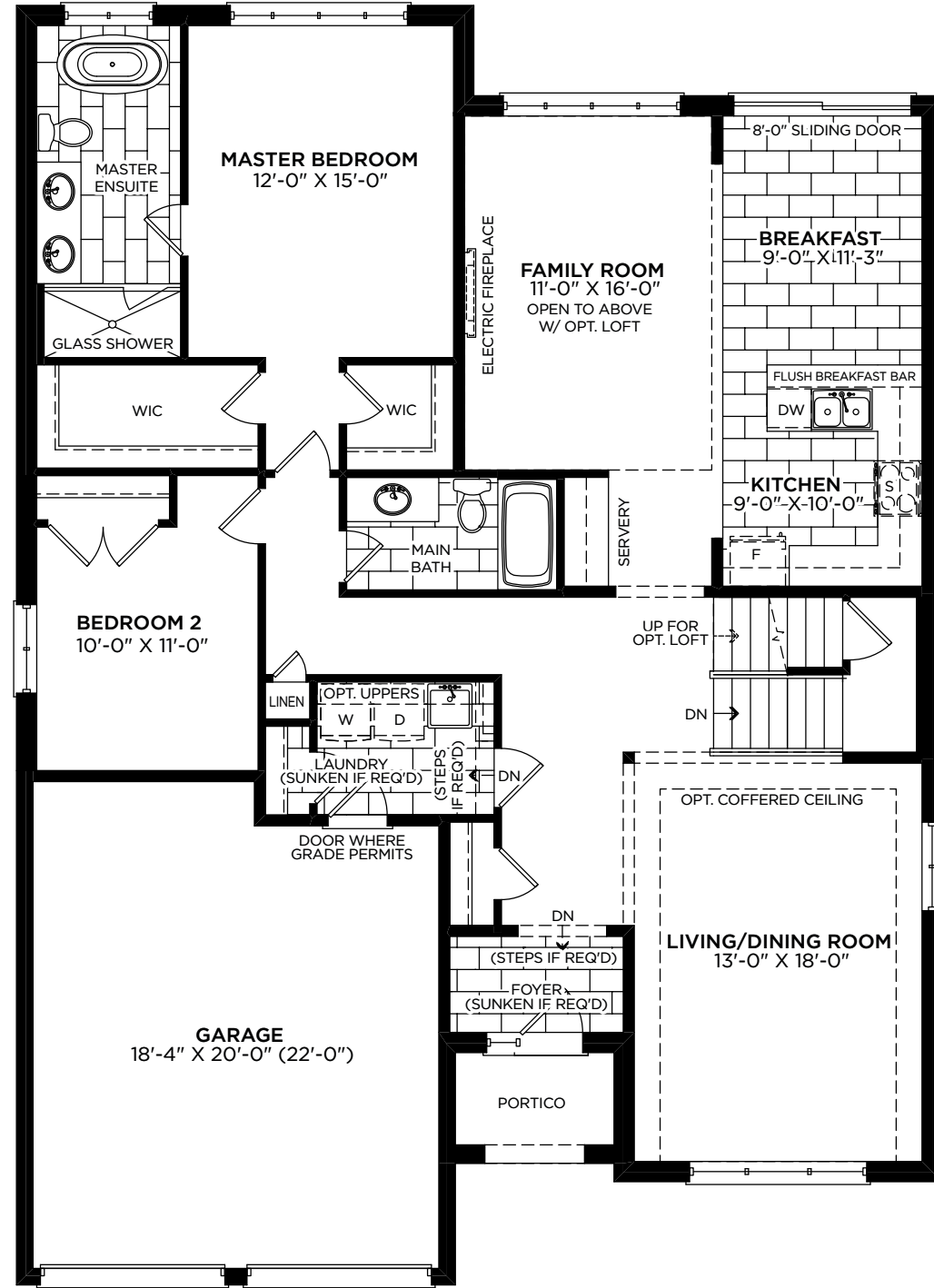
ELEVATION A 1,763 SQ. FT.



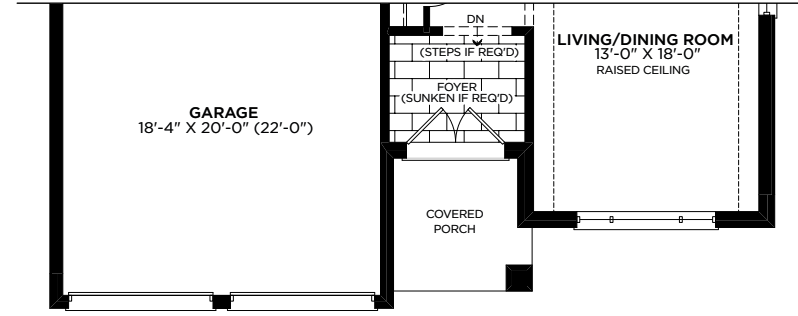
ELEVATION B 1,778 SQ. FT.

SEPODDY

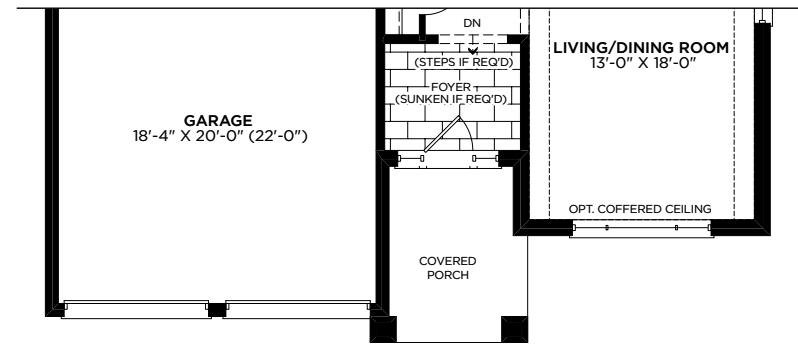
50



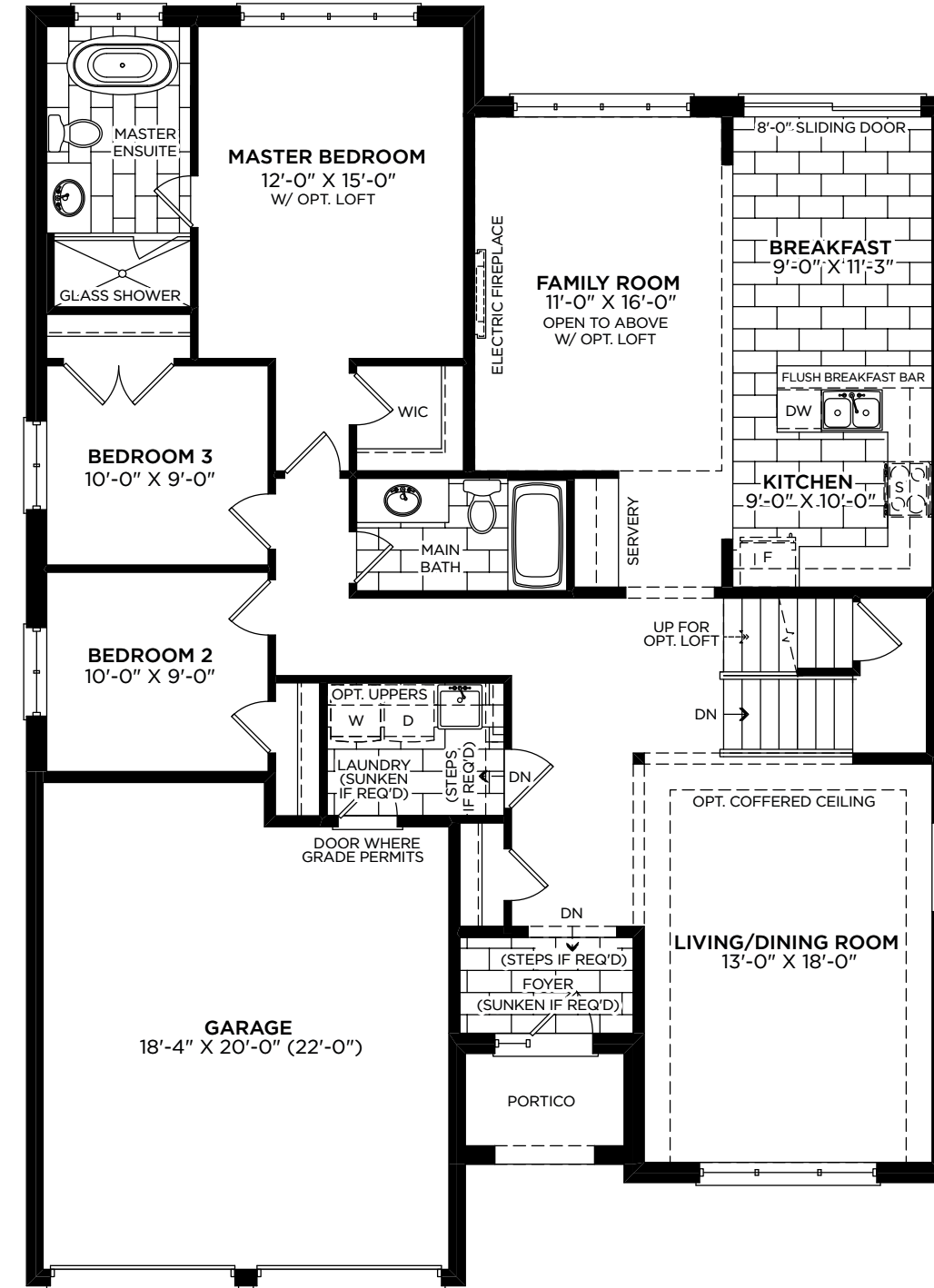
MAIN FLOOR ELEVATION A



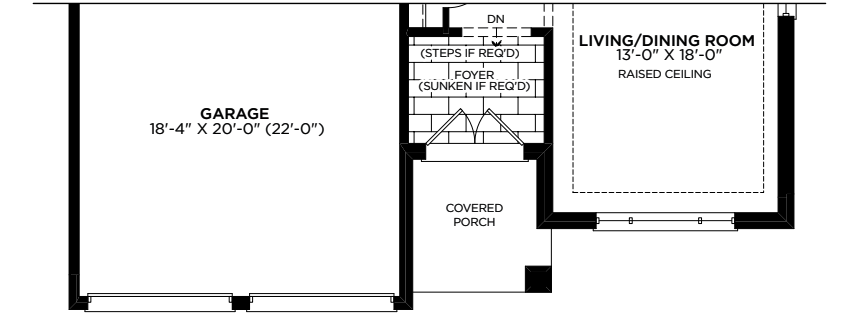
MAIN FLOOR ELEVATION B



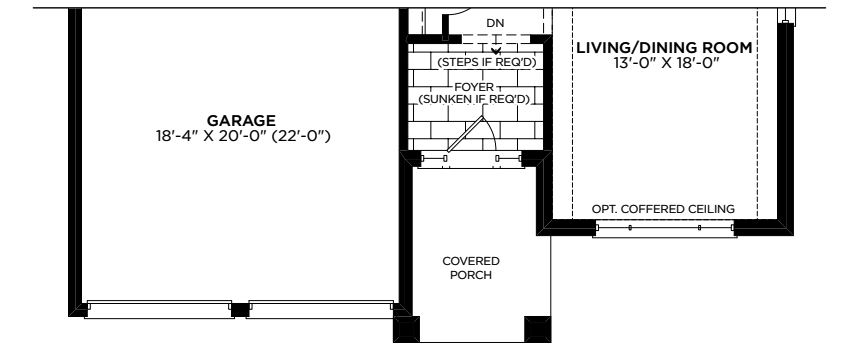
MAIN FLOOR ELEVATION C



ALTERNATE MAIN FLOOR ELEVATION A



ALTERNATE MAIN FLOOR ELEVATION B



ALTERNATE MAIN FLOOR ELEVATION C

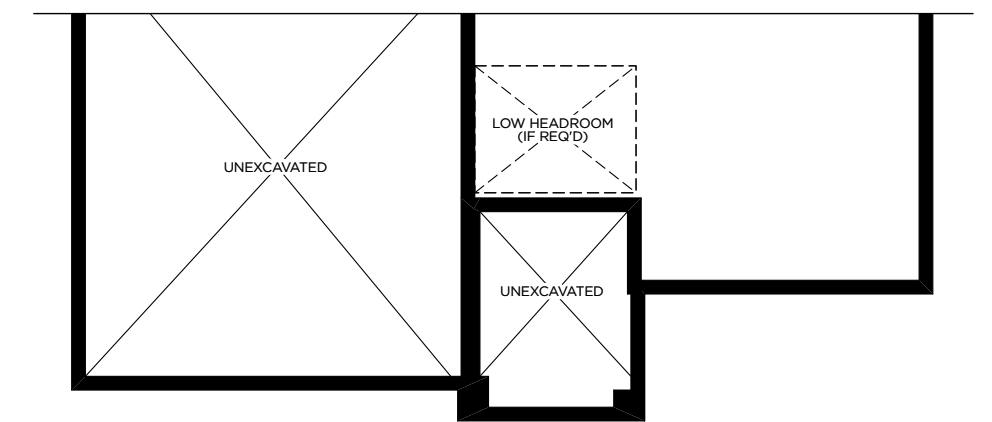
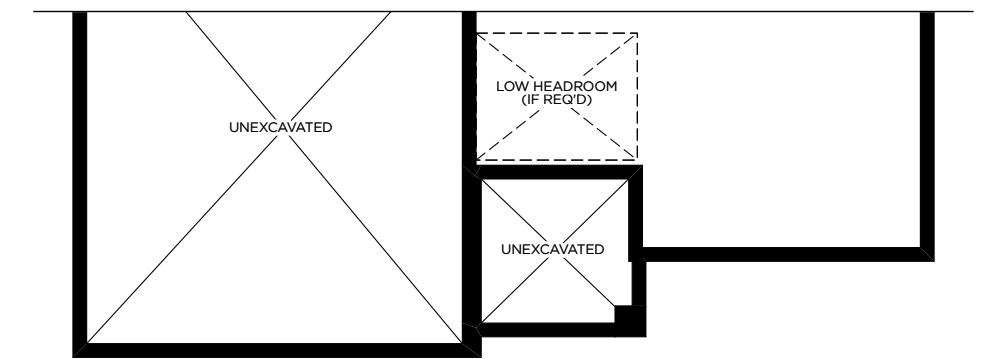
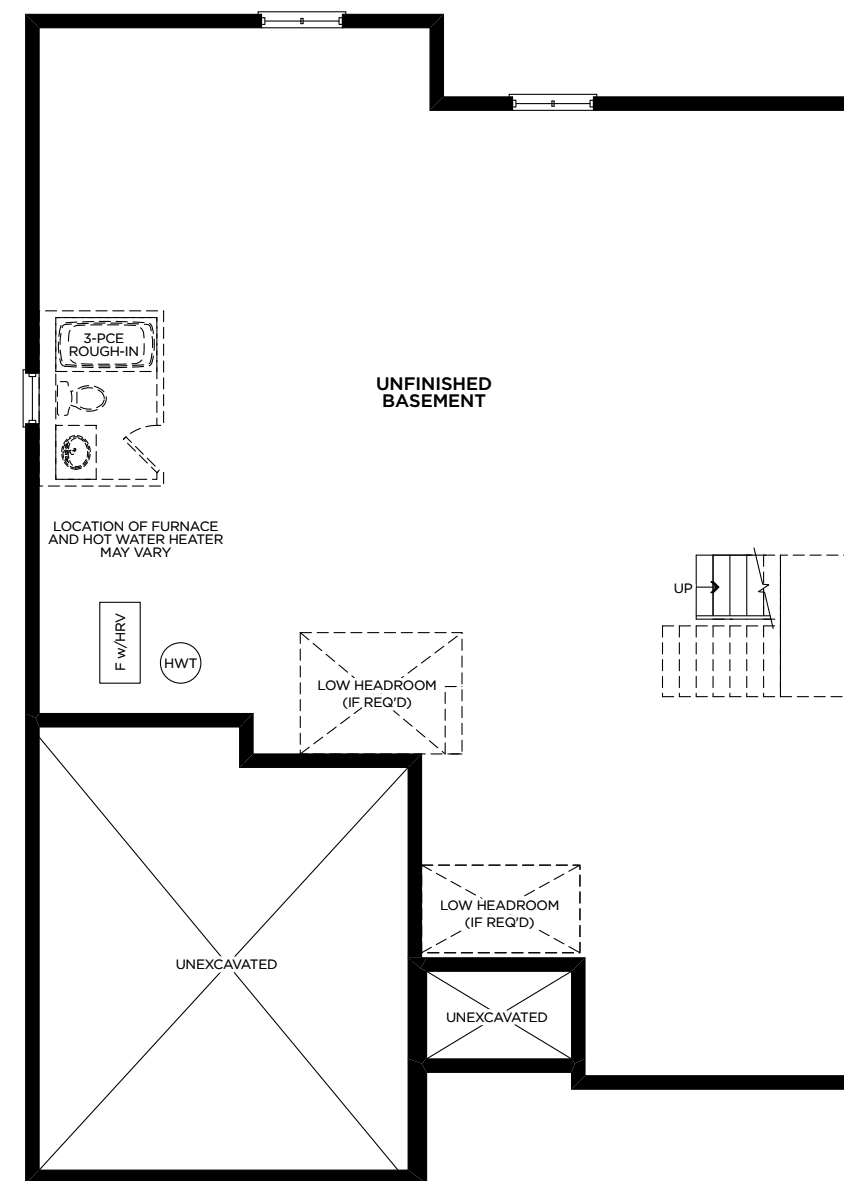
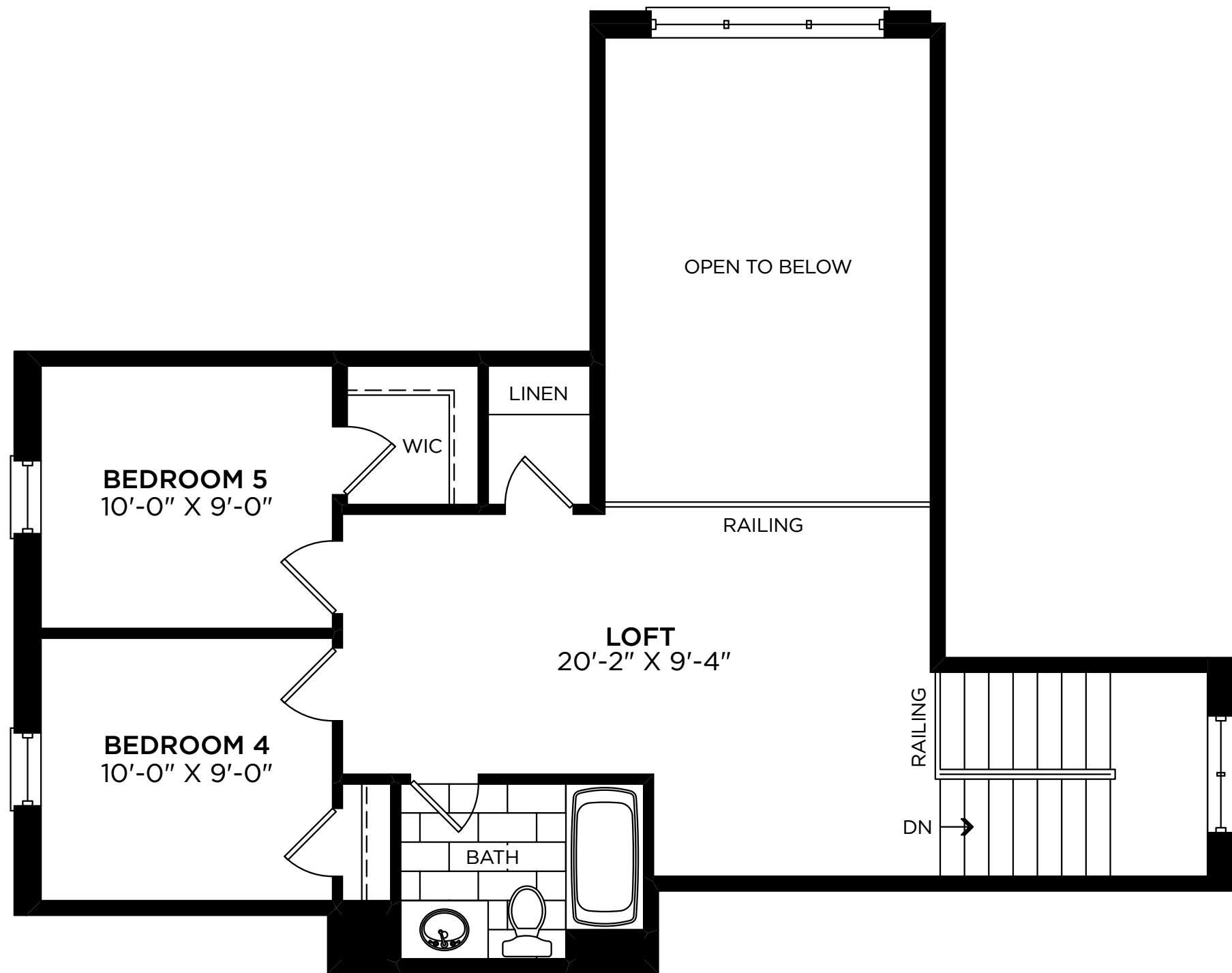


SEPODY

ELEVATION A 1,763 SQ. FT. \ ELEVATION B 1,778 SQ. FT. \ ELEVATION C 1,778 SQ. FT.
 ADDITIONAL 853 SQ. FT. FOR OPTIONAL LOFT.

All illustrations are artist's concept. Specifications and conditions are subject to change without notice. Actual usable floor space may vary from the stated floor area. Tile patterns may vary. Window size and location may vary. Location of furnace, hot water tank and support posts and beams are determined by the HVAC designer and architect respectively. Number of exterior steps may vary depending on the lot and the grading of individual home sites. Please see Sales for details. Materials, suppliers and upgrades may vary by builder. E.&O.E. 50-2





SEPODY

ELEVATION A 1,763 SQ. FT. \ ELEVATION B 1,778 SQ. FT. \ ELEVATION C 1,778 SQ. FT.
 ADDITIONAL 853 SQ. FT. FOR OPTIONAL LOFT.

All illustrations are artist's concept. Specifications and conditions are subject to change without notice. Actual usable floor space may vary from the stated floor area. Tile patterns may vary. Window size and location may vary. Location of furnace, hot water tank and support posts and beams are determined by the HVAC designer and architect respectively. Number of exterior steps may vary depending on the lot and the grading of individual home sites. Please see Sales for details. Materials, suppliers and upgrades may vary by builder. E.&O.E. 50-2





ELEVATION C 2,260 SQ. FT.



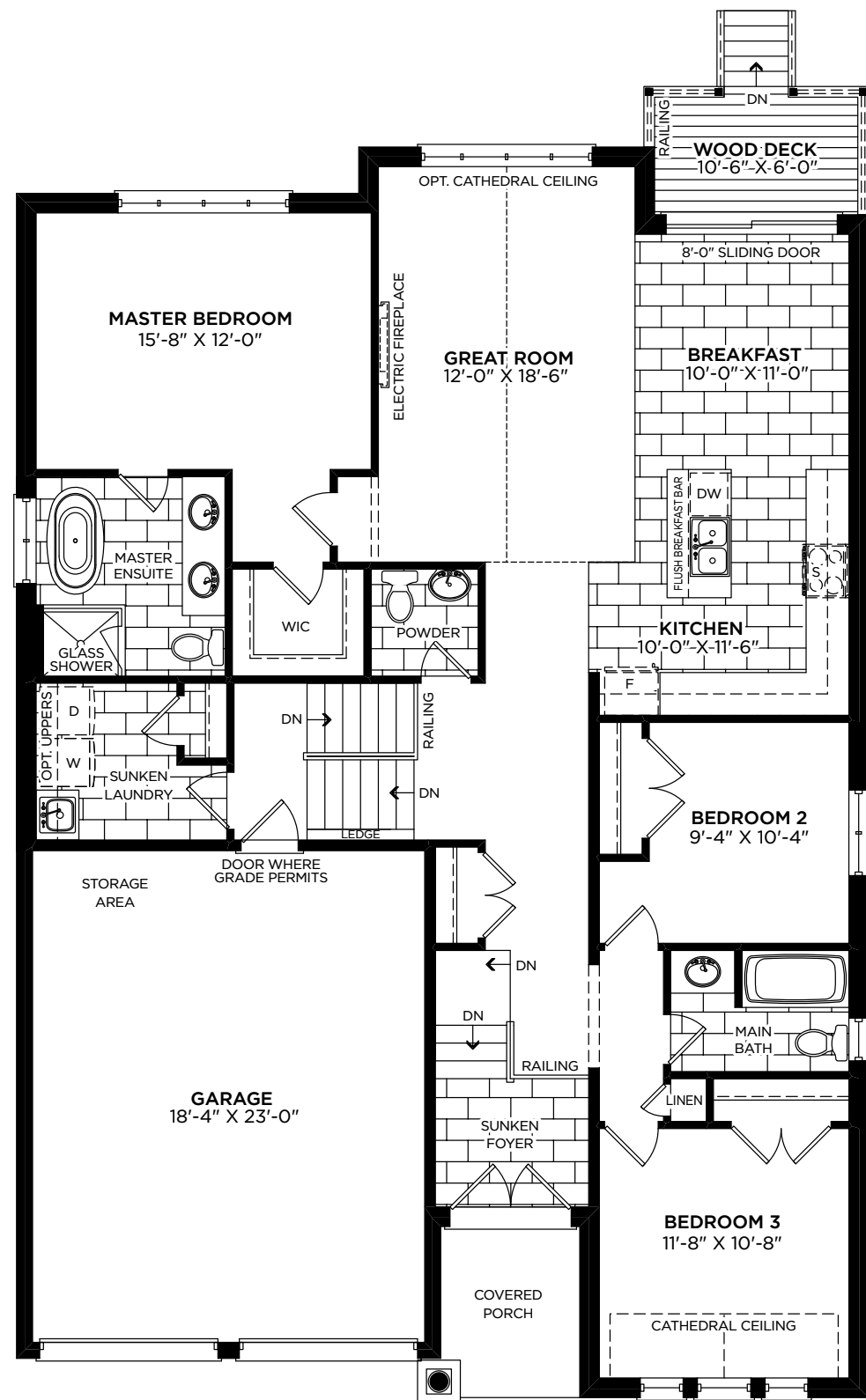
ELEVATION A 2,267 SQ. FT.



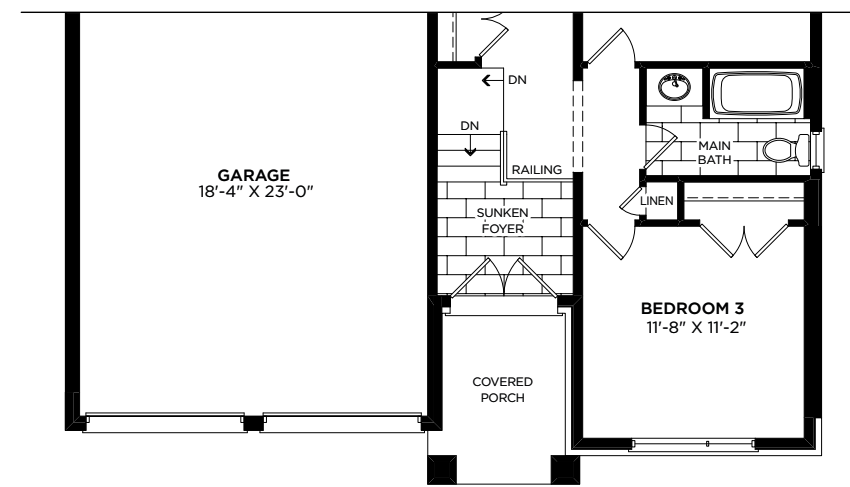
ELEVATION B 2,260 SQ. FT.

SPRINGWATER

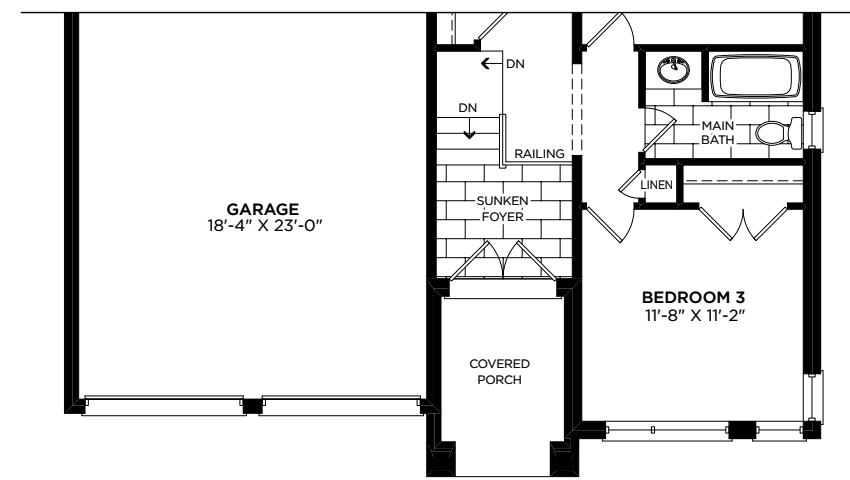
50



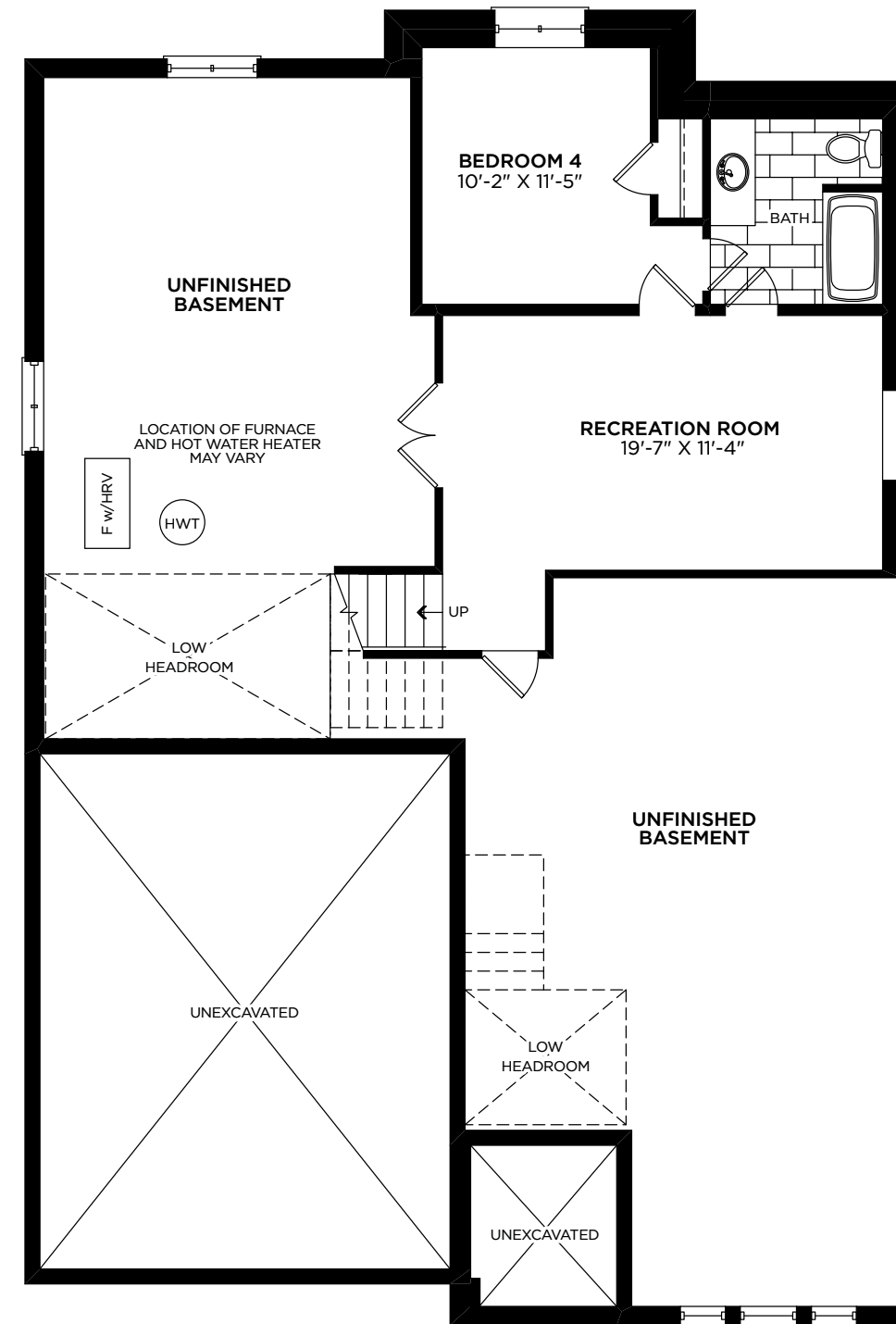
MAIN FLOOR ELEVATION A



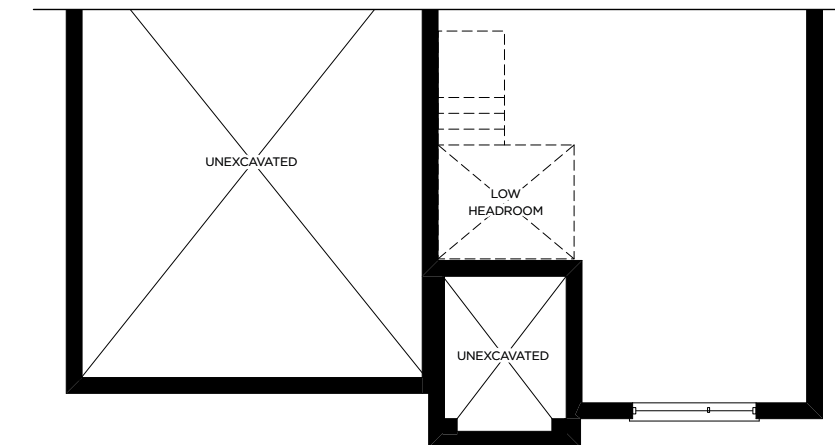
MAIN FLOOR ELEVATION B



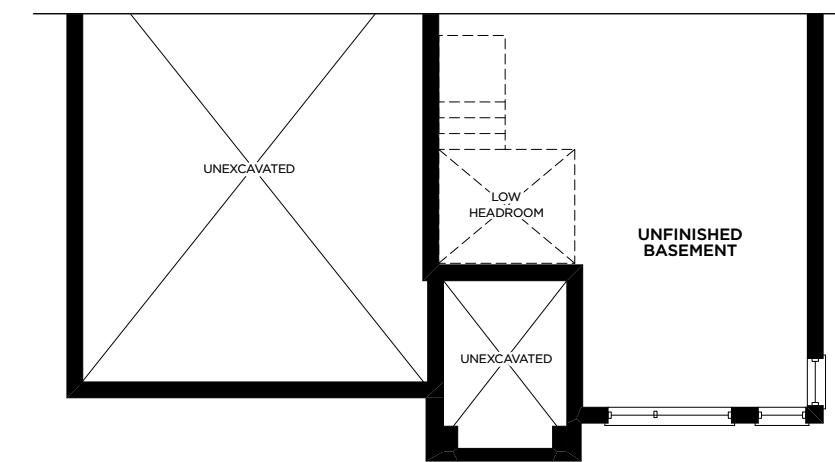
MAIN FLOOR ELEVATION C



BASEMENT ELEVATION A



BASEMENT ELEVATION B



BASEMENT ELEVATION C



SPRINGWATER ELEVATION A 2,267 SQ. FT. \ ELEVATION B 2,260 SQ. FT. \ ELEVATION C 2,260 SQ. FT.
INCLUDES 549 SQ. FT. FINISHED BASEMENT.

All illustrations are artist's concept. Specifications and conditions are subject to change without notice. Actual usable floor space may vary from the stated floor area. Tile patterns may vary. Window size and location may vary. Location of furnace, hot water tank and support posts and beams are determined by the HVAC designer and architect respectively. Number of exterior steps may vary depending on the lot and the grading of individual home sites. Please see Sales for details. Materials, suppliers and upgrades may vary by builder. E.&O.E. 50-3





ELEVATION C 2,500 SQ. FT.



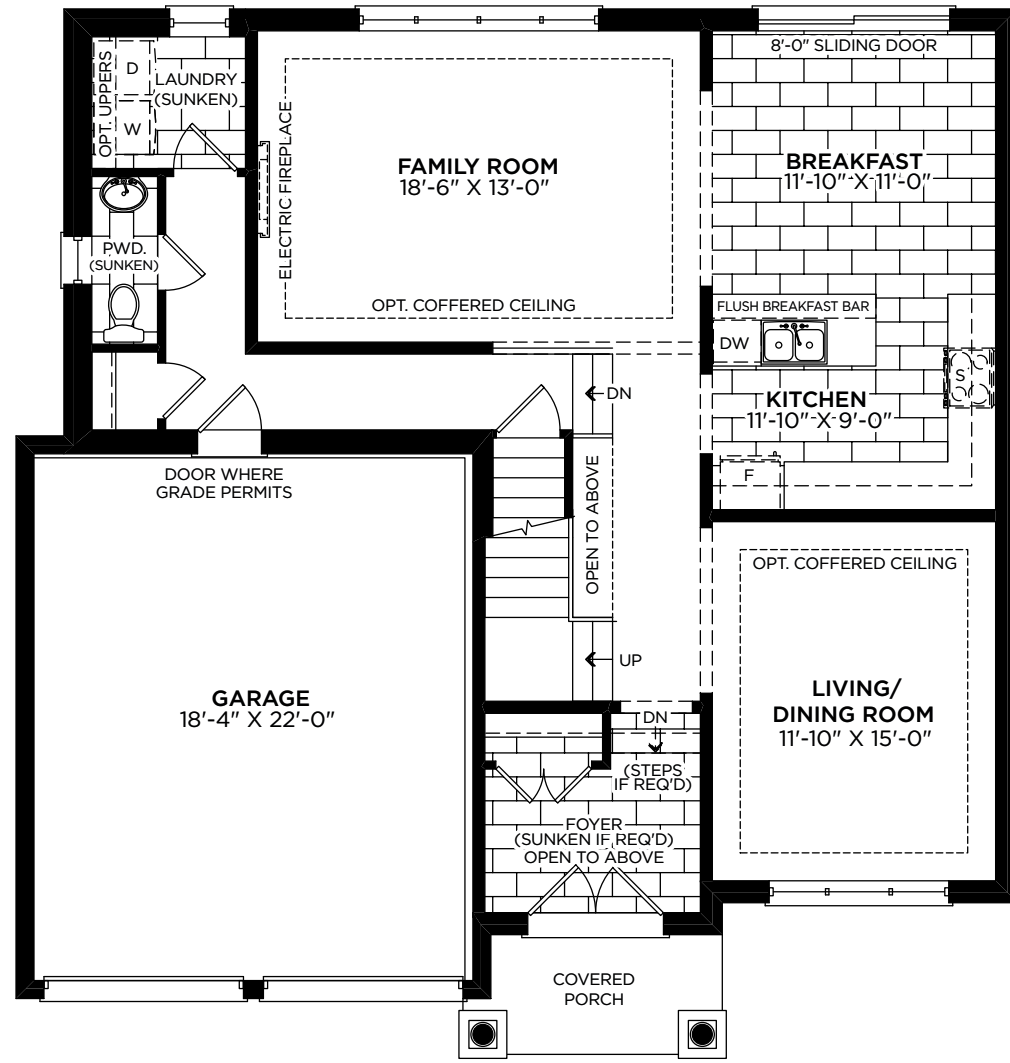
ELEVATION A 2,500 SQ. FT.



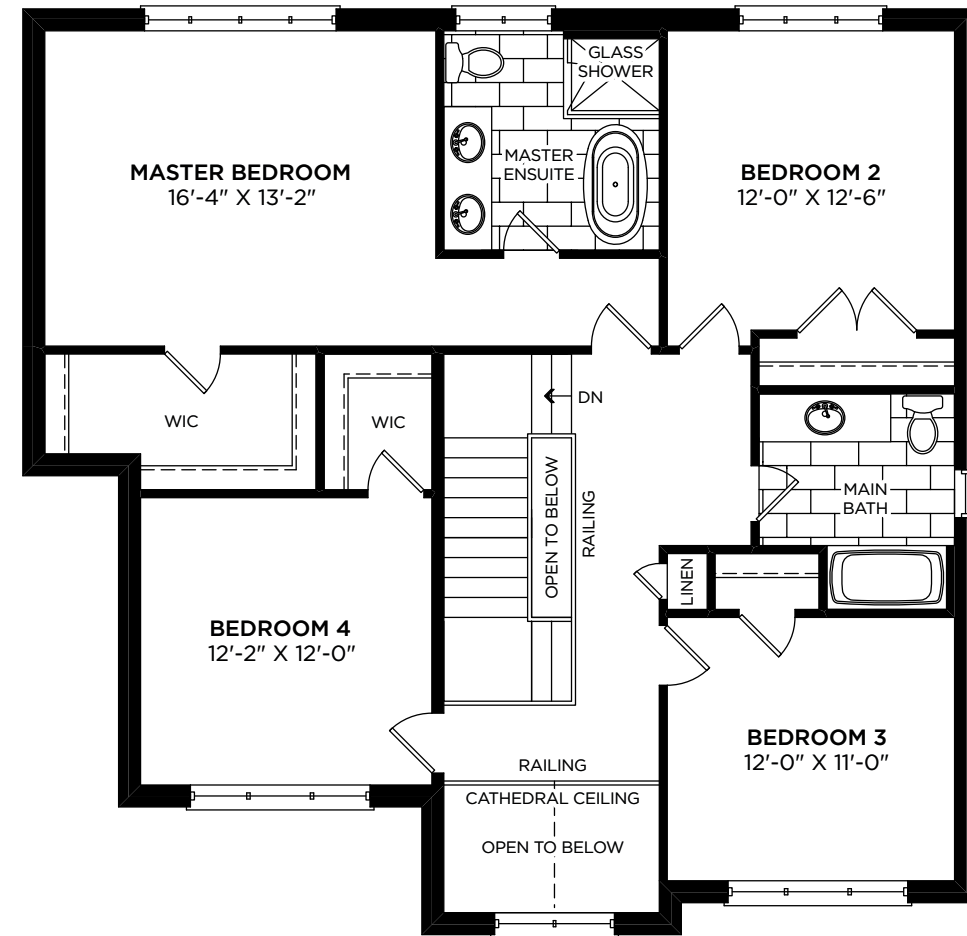
ELEVATION B 2,560 SQ. FT.

PINE

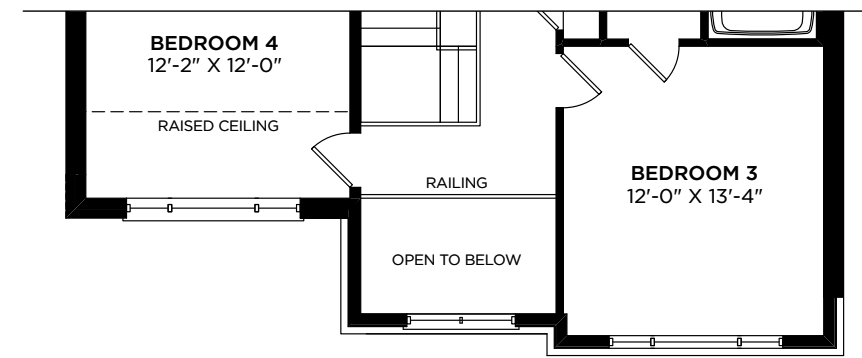
50



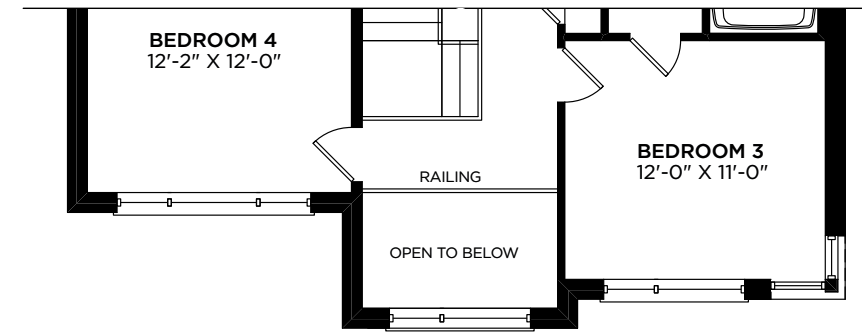
MAIN FLOOR ELEVATION A



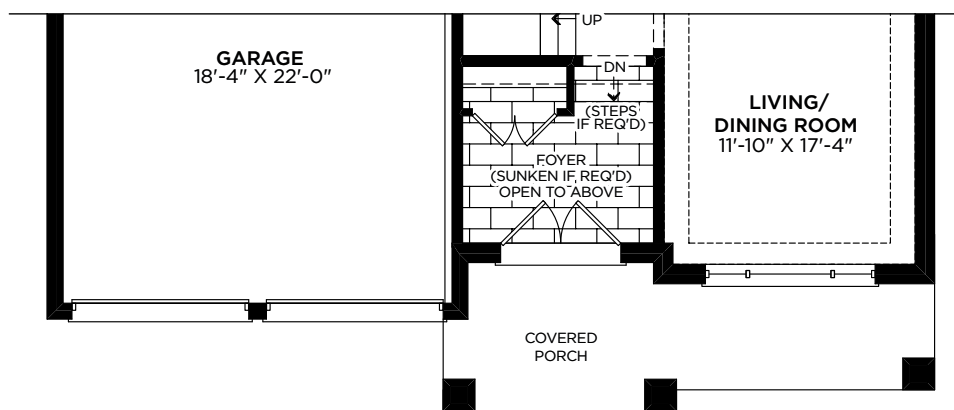
SECOND FLOOR ELEVATION A



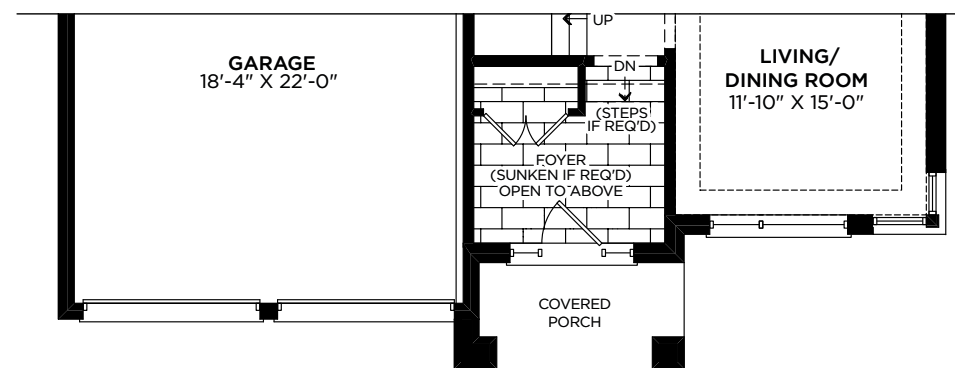
SECOND FLOOR ELEVATION B



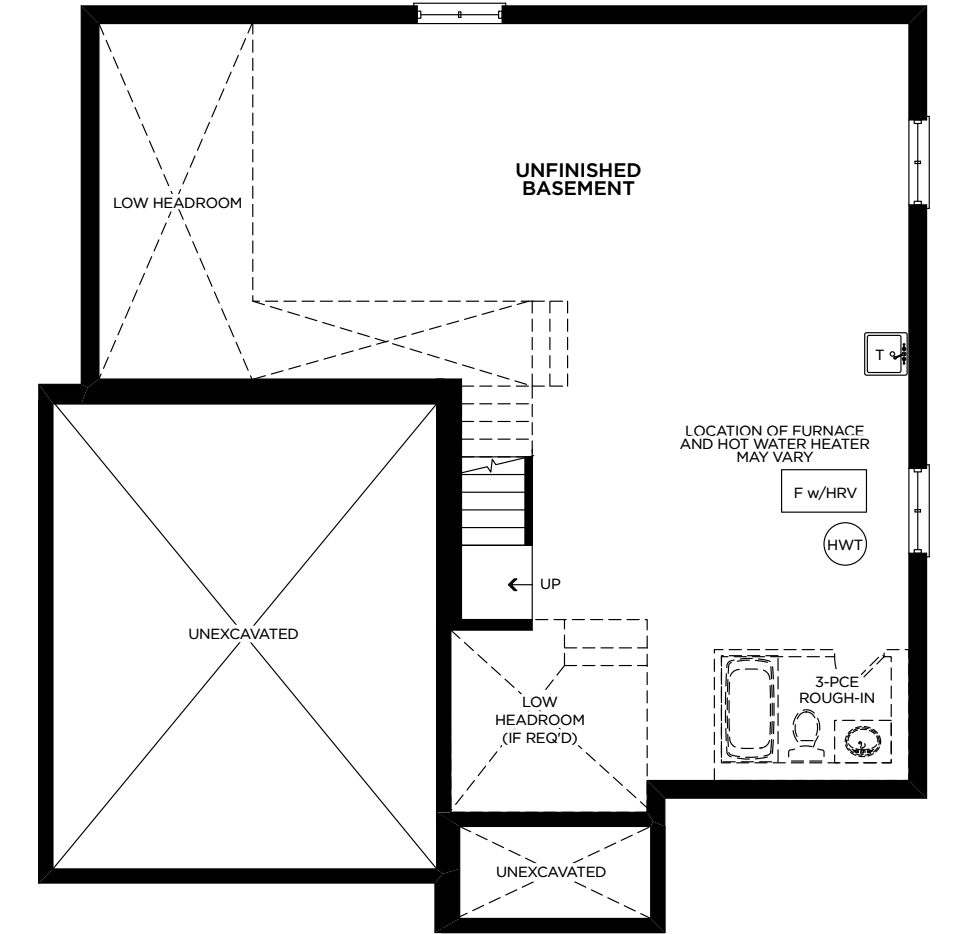
SECOND FLOOR ELEVATION C



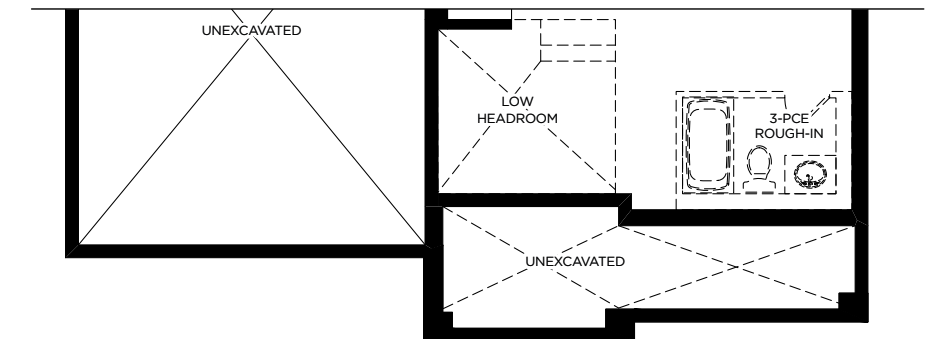
MAIN FLOOR ELEVATION B



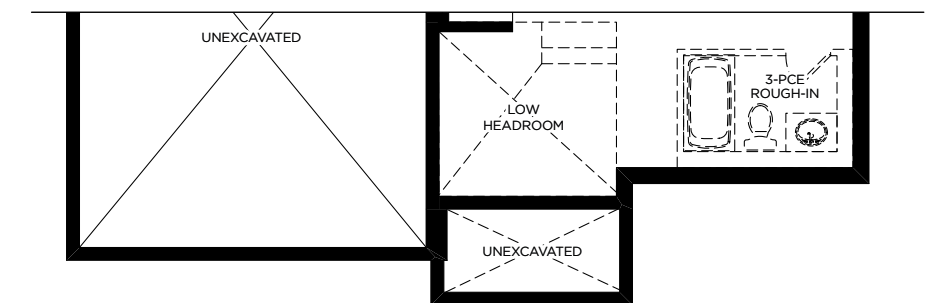
MAIN FLOOR ELEVATION C



BASEMENT ELEVATION A



BASEMENT ELEVATION B



BASEMENT ELEVATION C



PINE

ELEVATION A 2,500 SQ. FT. \ ELEVATION B 2,560 SQ. FT. \ ELEVATION C 2,500 SQ. FT.

All illustrations are artist's concept. Specifications and conditions are subject to change without notice. Actual usable floor space may vary from the stated floor area. Tile patterns may vary. Window size and location may vary. Location of furnace, hot water tank and support posts and beams are determined by the HVAC designer and architect respectively. Number of exterior steps may vary depending on the lot and the grading of individual home sites. Please see Sales for details. Materials, suppliers and upgrades may vary by builder. E.&O.E. 50-4





ELEVATION C 2,748 SQ. FT.



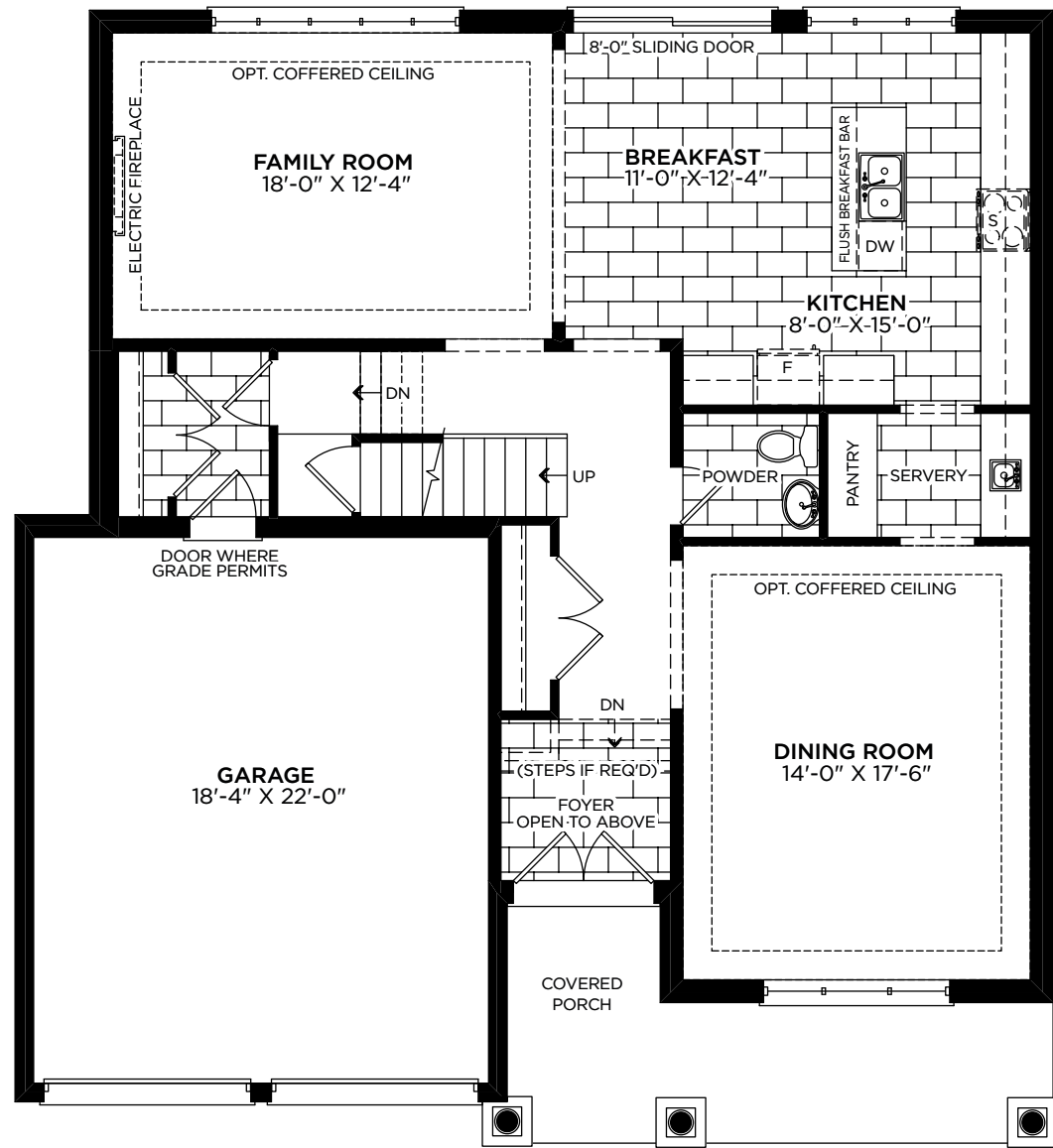
ELEVATION A 2,701 SQ. FT.



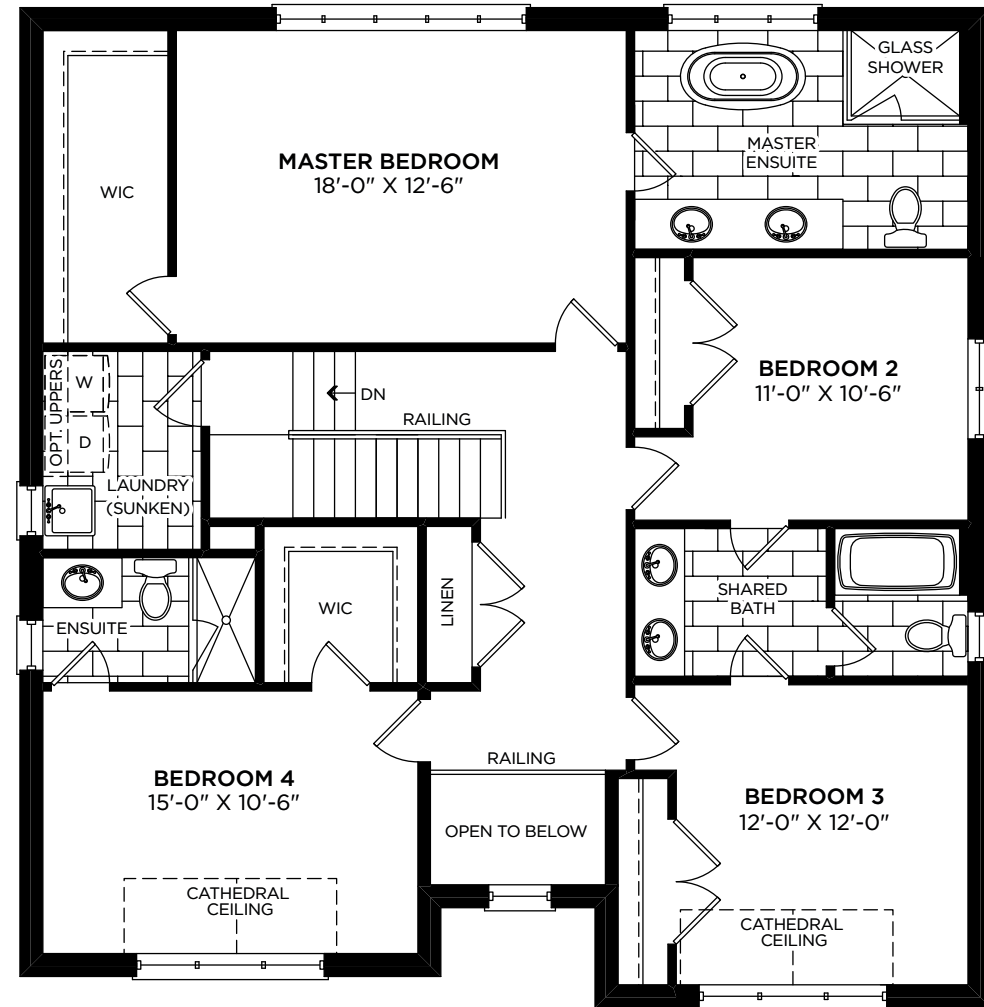
ELEVATION B 2,722 SQ. FT.

HUMBER

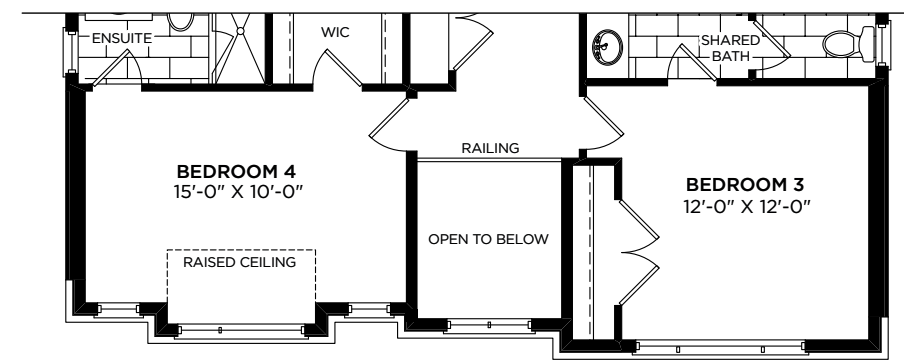
50



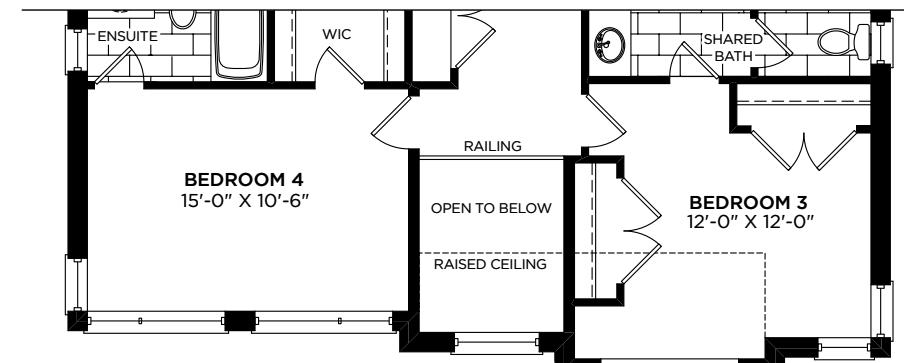
MAIN FLOOR ELEVATION A



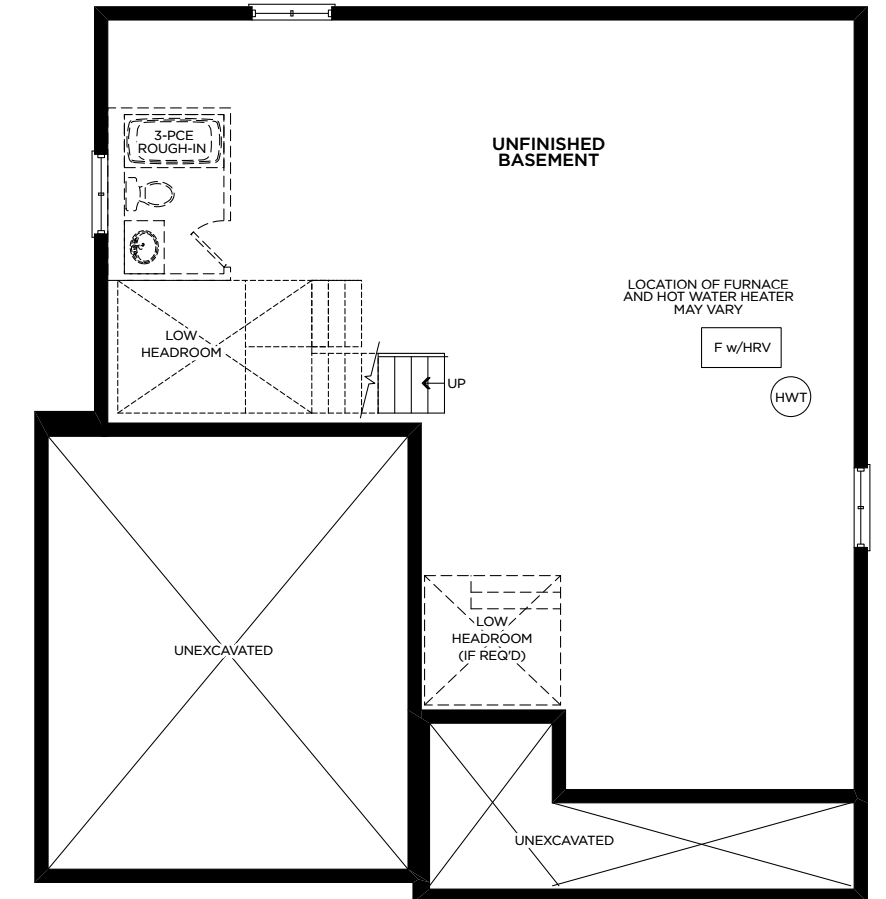
SECOND FLOOR ELEVATION A



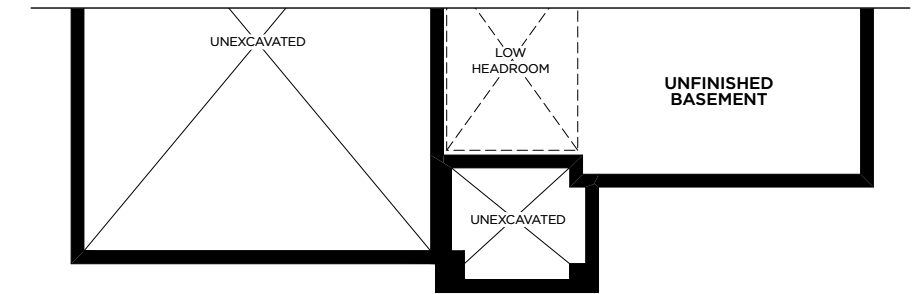
SECOND FLOOR ELEVATION B



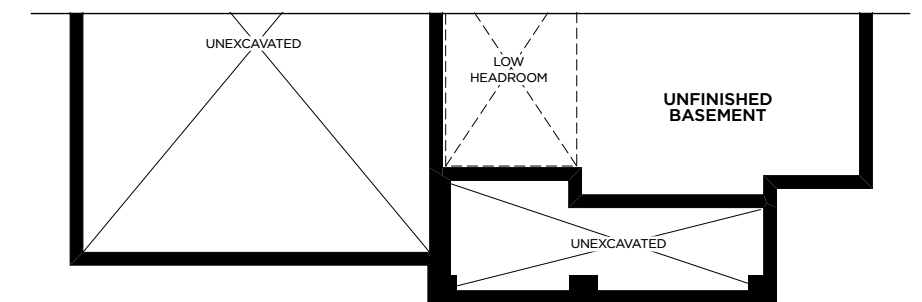
SECOND FLOOR ELEVATION C



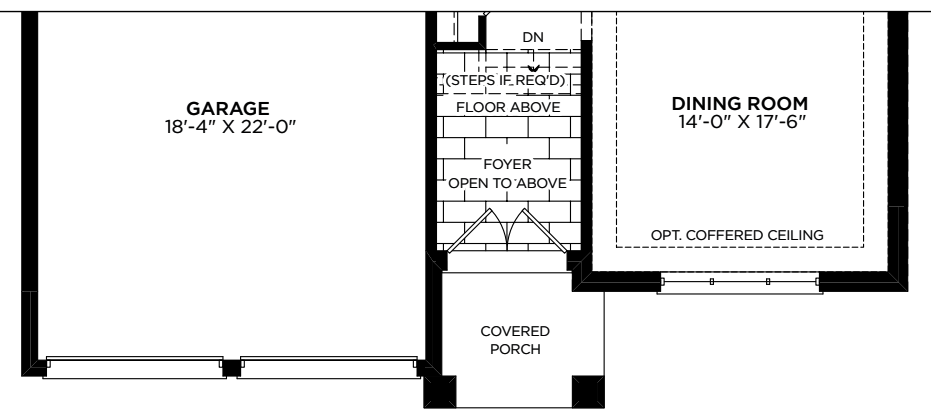
BASEMENT ELEVATION A



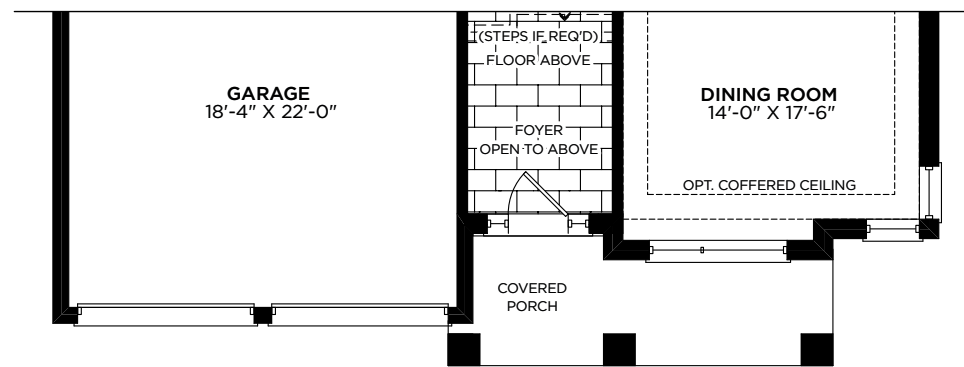
BASEMENT ELEVATION B



BASEMENT ELEVATION C



MAIN FLOOR ELEVATION B



MAIN FLOOR ELEVATION C



HUMBER

ELEVATION A 2,701 SQ. FT. \ ELEVATION B 2,722 SQ. FT. \ ELEVATION C 2,748 SQ. FT.

All illustrations are artist's concept. Specifications and conditions are subject to change without notice. Actual usable floor space may vary from the stated floor area. Tile patterns may vary. Window size and location may vary. Location of furnace, hot water tank and support posts and beams are determined by the HVAC designer and architect respectively. Number of exterior steps may vary depending on the lot and the grading of individual home sites. Please see Sales for details. Materials, suppliers and upgrades may vary by builder. E.&O.E. 50-5





ELEVATION C 3,139 SQ. FT.



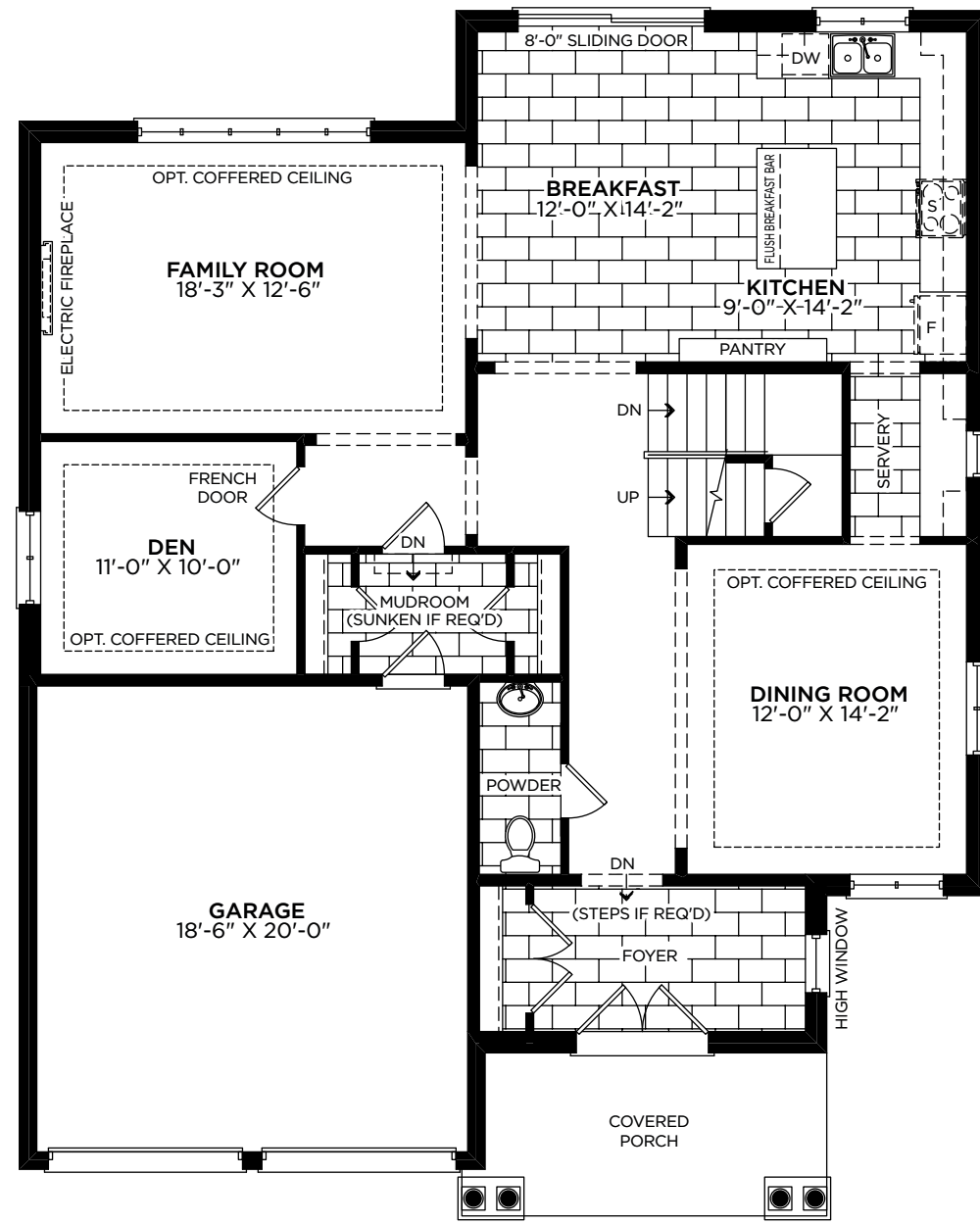
ELEVATION A 3,098 SQ. FT.



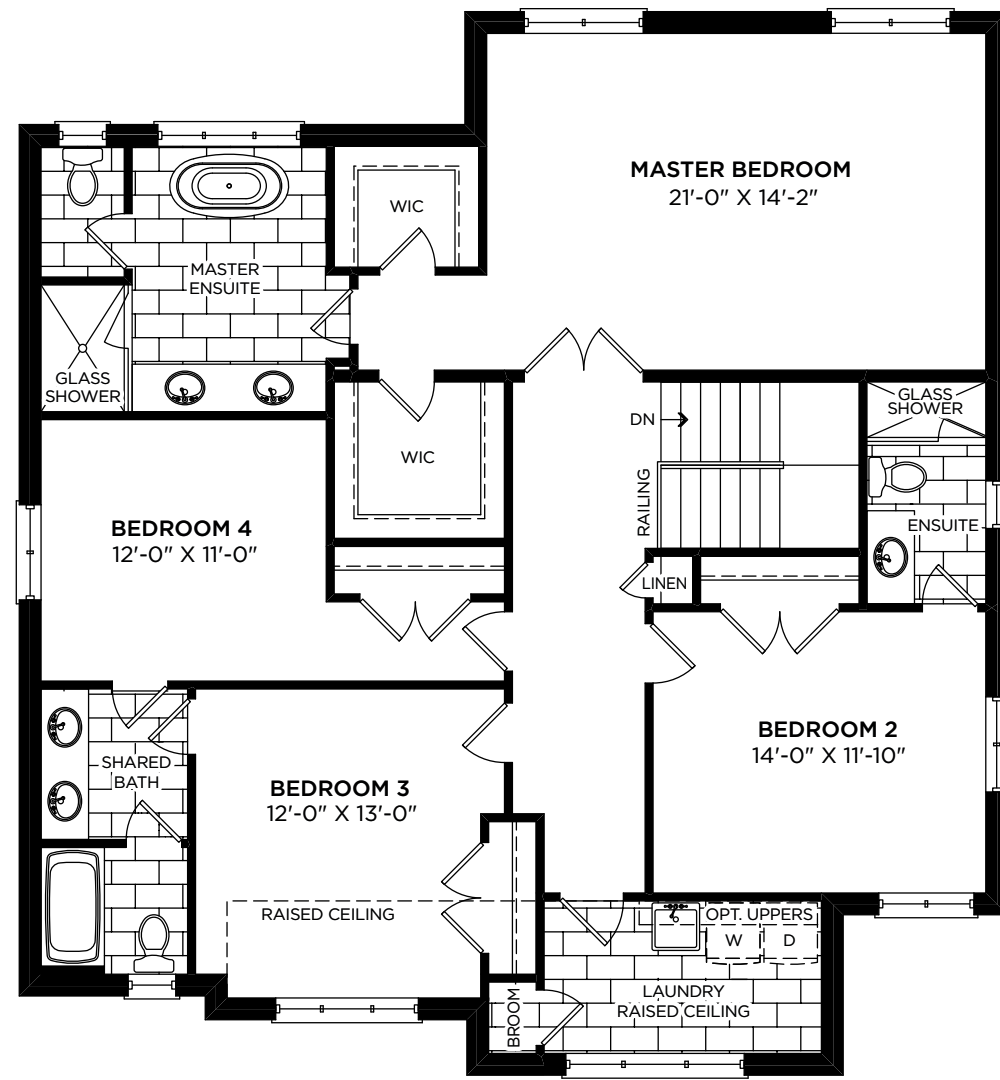
ELEVATION B 3,157 SQ. FT.

NIPISSING

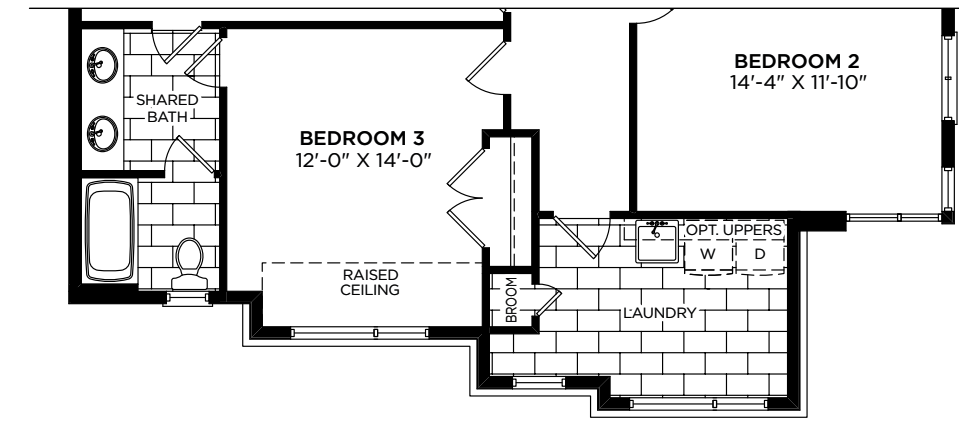
50



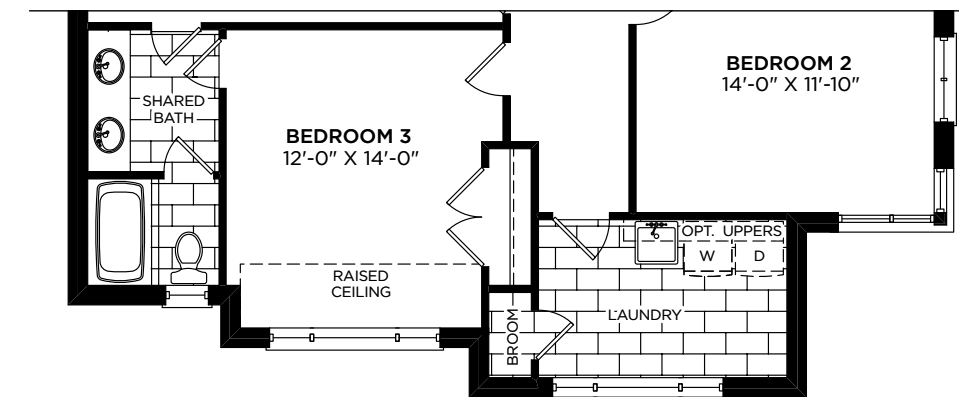
MAIN FLOOR ELEVATION A



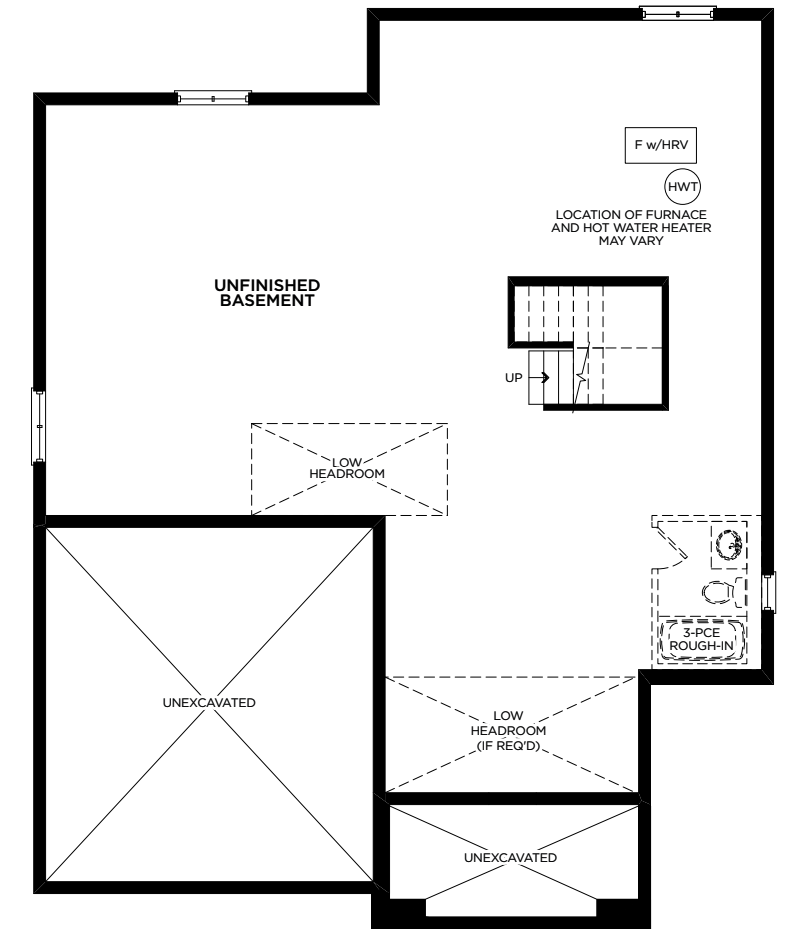
SECOND FLOOR ELEVATION A



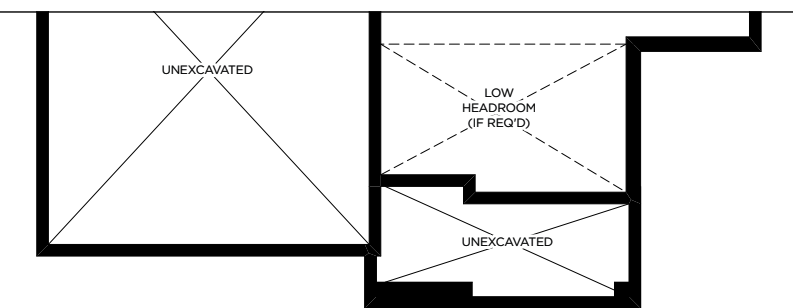
SECOND FLOOR ELEVATION B



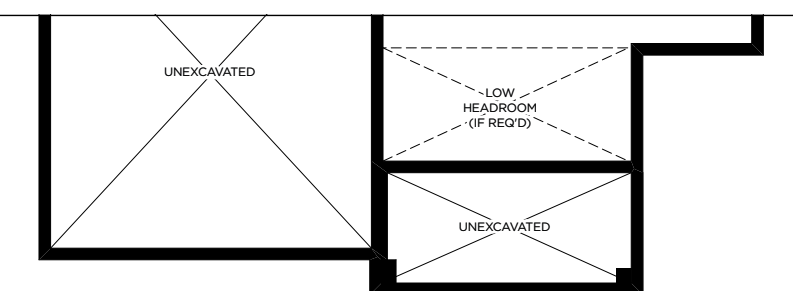
SECOND FLOOR ELEVATION C



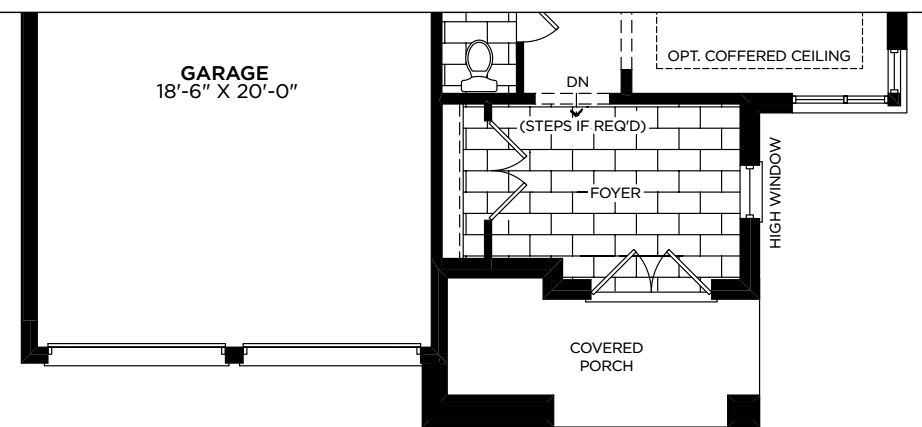
BASEMENT ELEVATION A



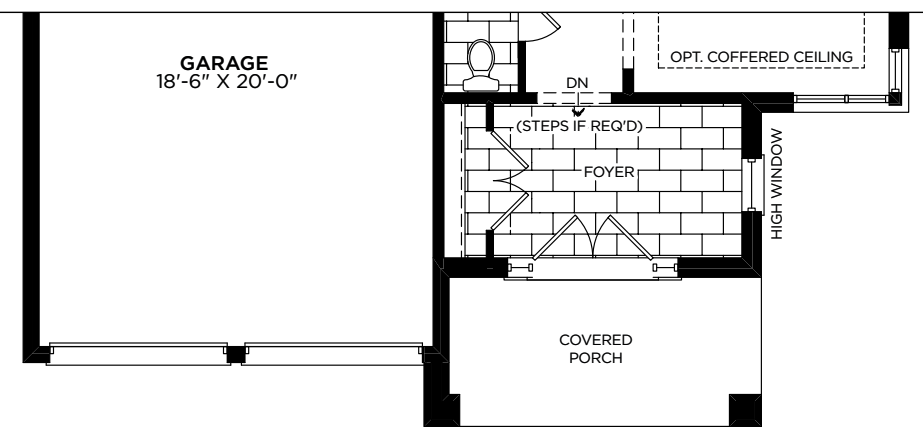
BASEMENT ELEVATION B



BASEMENT ELEVATION C



MAIN FLOOR ELEVATION B



MAIN FLOOR ELEVATION C



NIPISSING

ELEVATION A 3,098 SQ. FT. \ ELEVATION B 3,157 SQ. FT. \ ELEVATION C 3,139 SQ. FT.

All illustrations are artist's concept. Specifications and conditions are subject to change without notice. Actual usable floor space may vary from the stated floor area. Tile patterns may vary. Window size and location may vary. Location of furnace, hot water tank and support posts and beams are determined by the HVAC designer and architect respectively. Number of exterior steps may vary depending on the lot and the grading of individual home sites. Please see Sales for details. Materials, suppliers and upgrades may vary by builder. E.&O.E. 50-6

